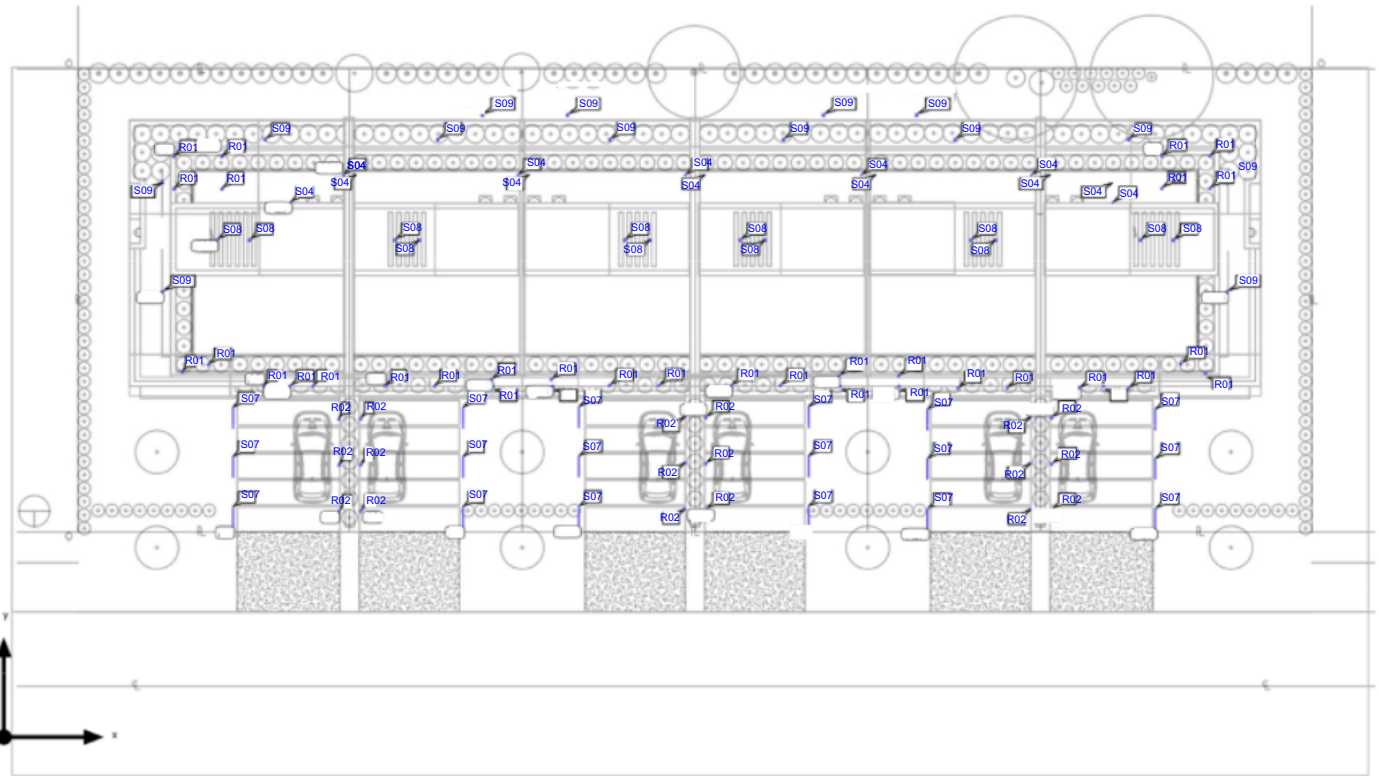


Luminaire layout plan



PZ23-13000003
3225 NE 3rd ST, Pompano Beach, FL
03/06/2024

Exterior Photometric Report

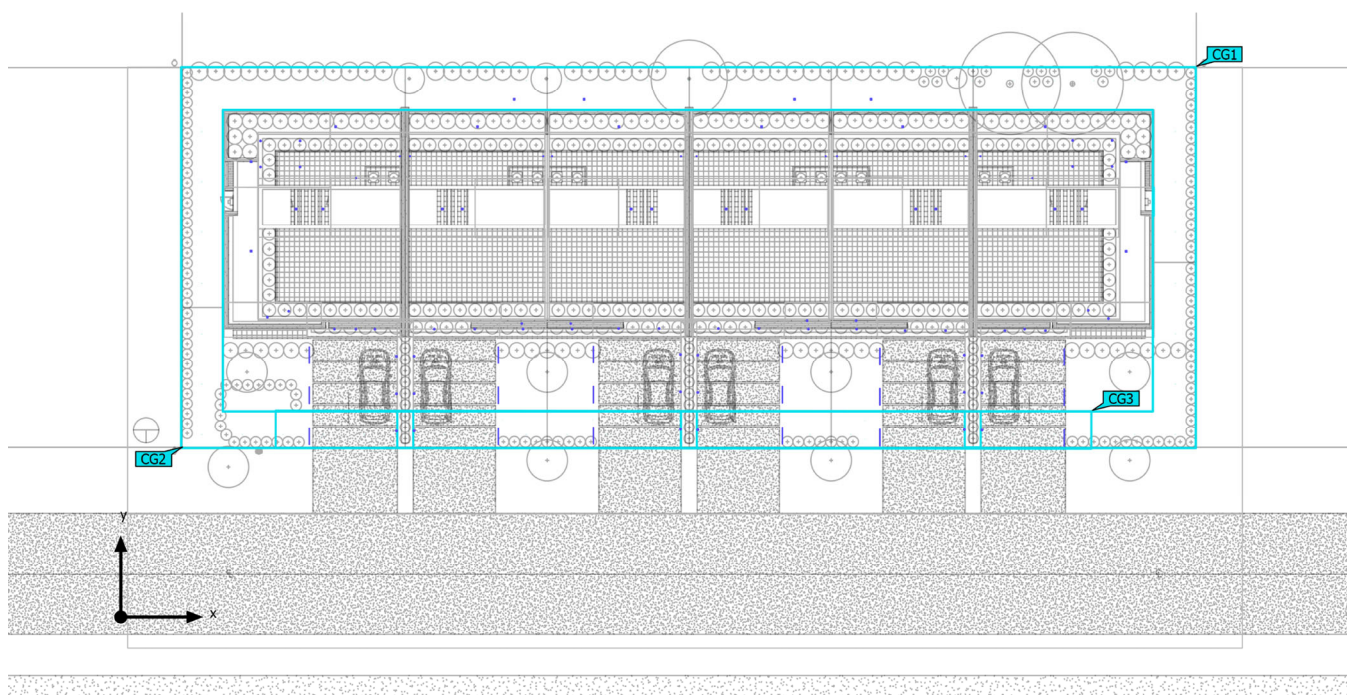
Luminaire list

Φ_{total} 79594 lm		P_{total} 1306.0 W		Luminous efficacy 60.9 lm/W			
pcs.	Manufacturer	Article No.	Article name	h	P	Φ	Luminous efficacy
34	Not yet a DIALux member	R01	NIOB-2RC3025WW/10	9.3 ft (1st level) 9.3 ft (2nd level) 9.3 ft (3rd level)	13.2 W	1252 lm	95.1 lm/W
18	Not yet a DIALux member	S07	Landscapae path light	2.3 f (1st level)	7.0 W	230 lm	32.9 lm/W
18	Not yet a DIALux member	R02	Step light	2.3 ft (1st level)	4.3 W	88 lm	20.3 lm/W
12	Not yet a DIALux member	S08	Surface-mounted Luminaires	8.3 ft (roof top)	16.2 W	945 lm	58.3 lm/W
14	Not yet a DIALux member	S09	Surface-mounted Luminaires	6.7 ft (1st level) 6.7 ft (3rd level)	15.5 W	789 lm	50.9 lm/W
12	Not yet a DIALux member	S04	Surface-mounted Luminaires	5 ft (roof top)	20.2 W	743 lm	36.7 lm/W

PZ23-13000003
3225 NE 3RD ST, Pompano Beach, FL
03/06/2024

Exterior Photometric Report

Calculation objects



CG1

Property Line
Perpendicular illuminance
Height: 5 ft

CG2

Property Line
Perpendicular illuminance
Height: 0 ft

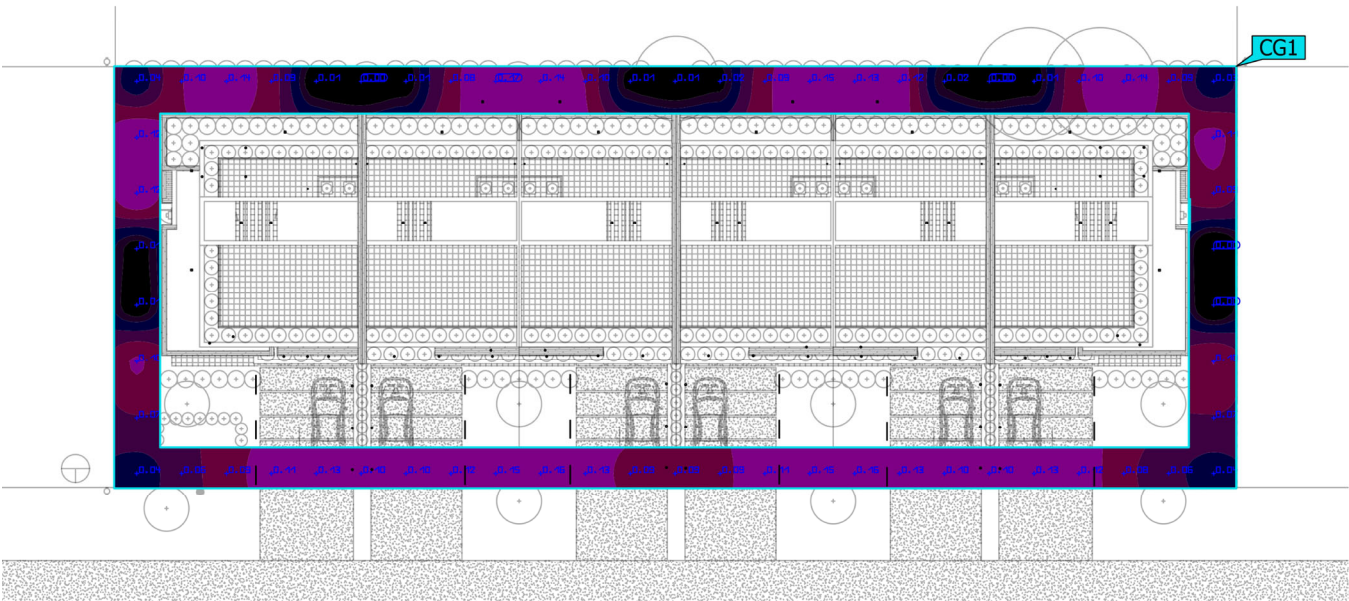
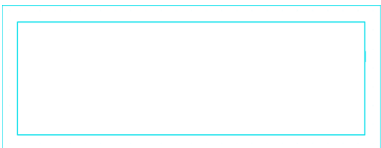
CG3

Vehicular Use Area
Perpendicular illuminance
Height: 0 ft

PZ23-13000003
3225 NE 3rd ST, Pompano Beach, FL
03/06/2024

Exterior Photometric Report

Property Line



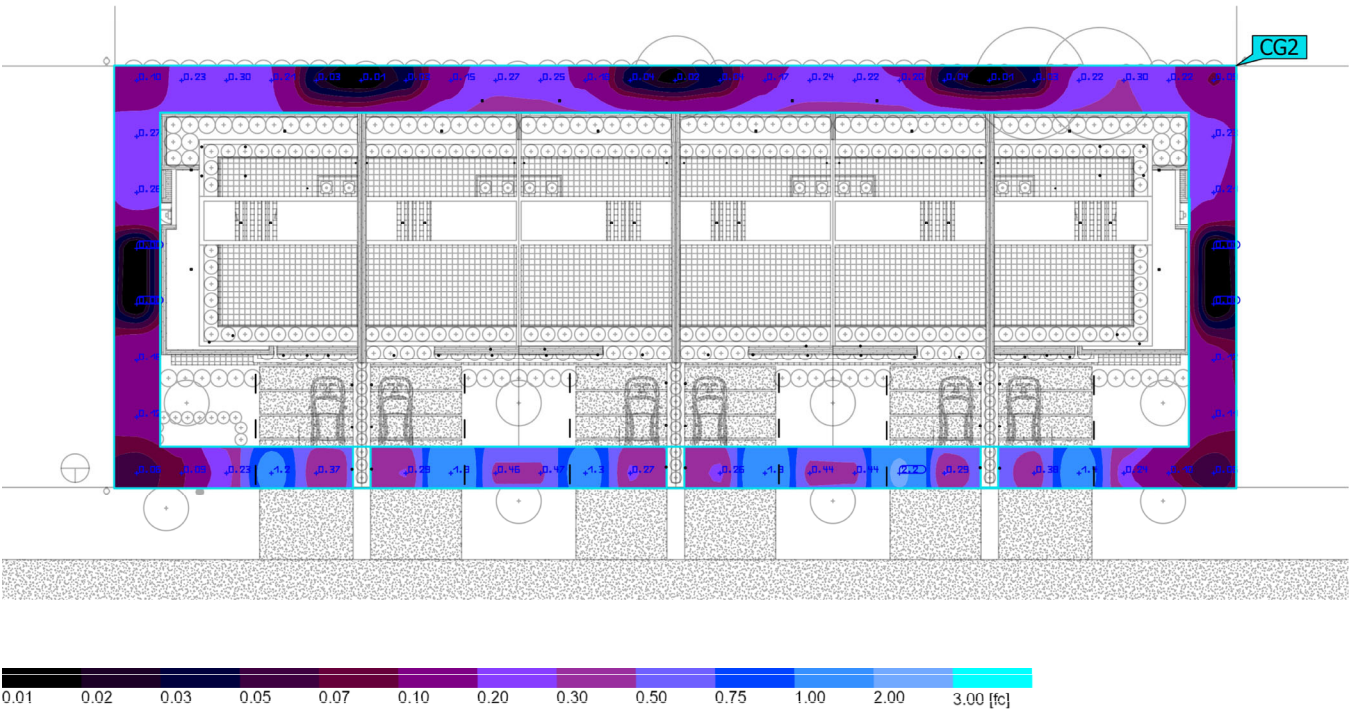
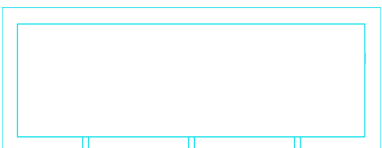
Properties	\bar{E}	E_{min}	E_{max}	$U_o (g_1)$	g_2	Index
Property Line Perpendicular illuminance Height: 5 ft	0.085 fc	0.001 fc	0.17 fc	0.009	0.004	CG1

Utilisation profile: DIALux preset (Default (Drive Aisles/Parking Areas))

PZ23-13000003
3225 NE ST, Pompano Beach, FL
03/06/2024

Exterior Photometric Report

Property Line

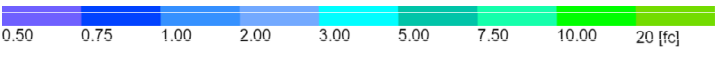
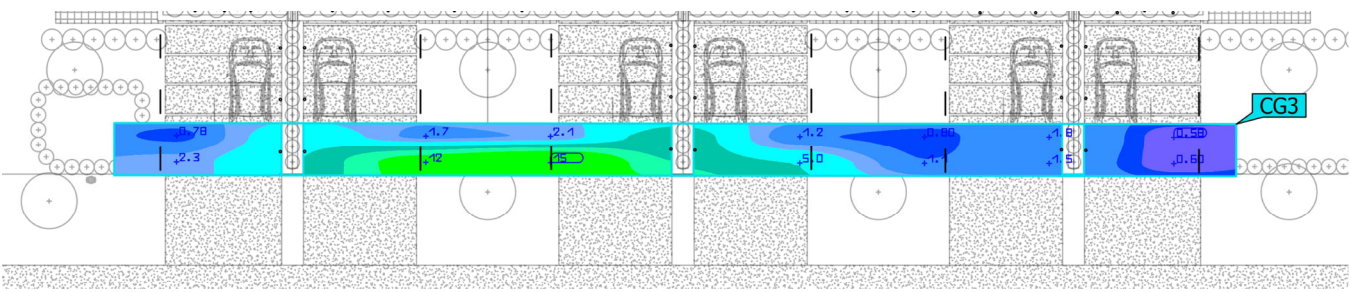


Properties	\bar{E}	E_{min}	E_{max}	$U_o (g_1)$	g_2	Index
Property Line Perpendicular illuminance Height: 0 ft	0.33 fc	0.002 fc	2.22 fc	0.005	0.001	CG2

Utilisation profile: DIALux preset (Default (Drive Aisles/Parking Areas))

Exterior Photometric Report

Vehicular Use Area



Properties	\bar{E}	E_{min}	E_{max}	$U_o (g_1)$	g_2	Index
Vehicular Use Area Perpendicular illuminance Height: 0.374 ft	3.34 fc	0.58 fc	15.4 fc	0.17	0.037	CG3

Utilisation profile: DIALux preset (Default (Drive Aisles/Parking Areas))